



# 51<sup>st</sup> Turkish Naval Forces Cup



*“one race  
two straits, two seas*

**TAYK**   
*Turkish Offshore Racing Club*

**AKPA**  
ORGANIC PEROXIDES, INITIATORS  
PAINT DRIERS

  
1957  
**TYF**  
TÜRKİYE YELKEN  
FEDERASYONU





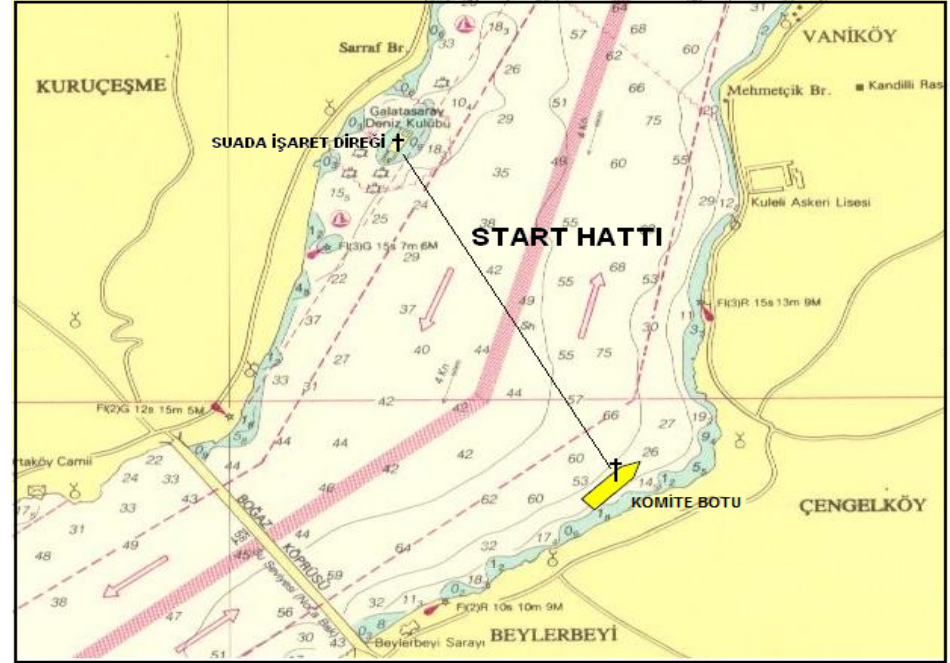
The COURSE



**TAYK**   
Turkish Offshore Racing Club



**Start (RC Vessel)**  
**41° 2.750'N**  
**029° 2.650'E**  
**CENGLKÖY**  
**İSTANBUL**





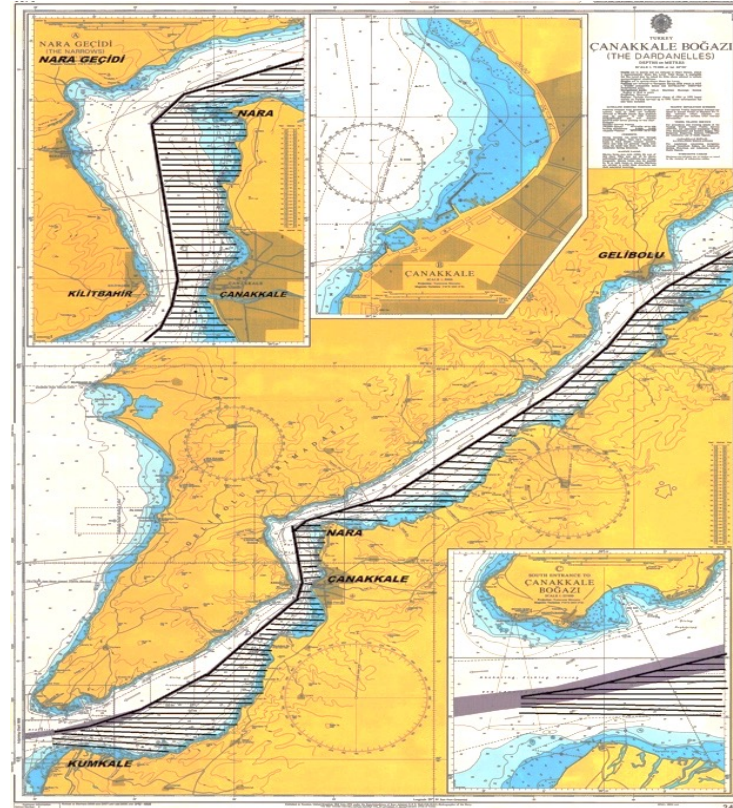


MARMARA  
SEA





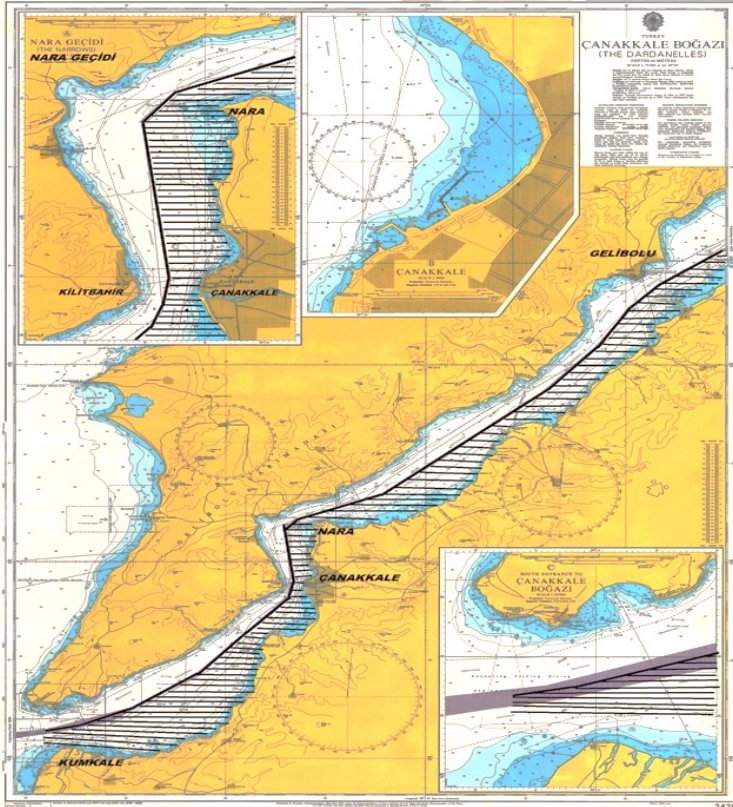
**CANAKKALE**  
Straight  
DARDANEL







## CANAKKALE Straight DARDANEL



### APPENDIX A: MID-POINT COORDINATES FOR THE DARDANELLES STRAITS AND THE AREAS PROHIBITED FOR NAVIGATION

1:	40° 26',000 N	026° 45',250 E	- 3,5 NM to Gelibolu, entrance into the Strait
2:	40° 24',050 N	026° 41',650 E	- Gelibolu
3:	40° 22',830 N	026° 40',210 E	
4:	40° 20',900 N	026° 38',550 E	
5:	40° 18',730 N	026° 35',700 E	- Updated
6:	40° 13',400 N	026° 27',800 E	
7:	40° 12',110 N	026° 23',500 E	- Nara 1
8:	40° 11',630 N	026° 22',950 E	- Nara 2
9:	40° 09',000 N	026° 23',400 E	- Çanakkale
10:	40° 08',550 N	026° 23',300 E	- Kilitbahir
11:	40° 08',150 N	026° 23',090 E	
12:	40° 04',250 N	026° 18',540 E	
13:	40° 02',590 N	026° 15',450 E	
14:	NOT REQUIRED		

Note: The map is provided for visualisation only. The GPS coordinates for the mid-point line are listed above.



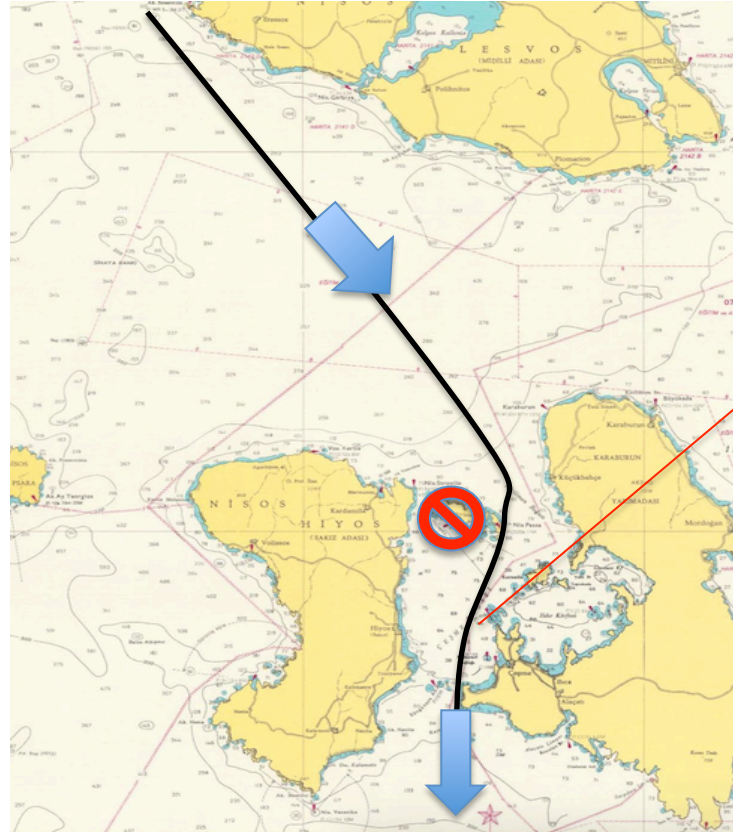
Bozcaada(Starboard) &  
Midilli (Lesbos) to Port







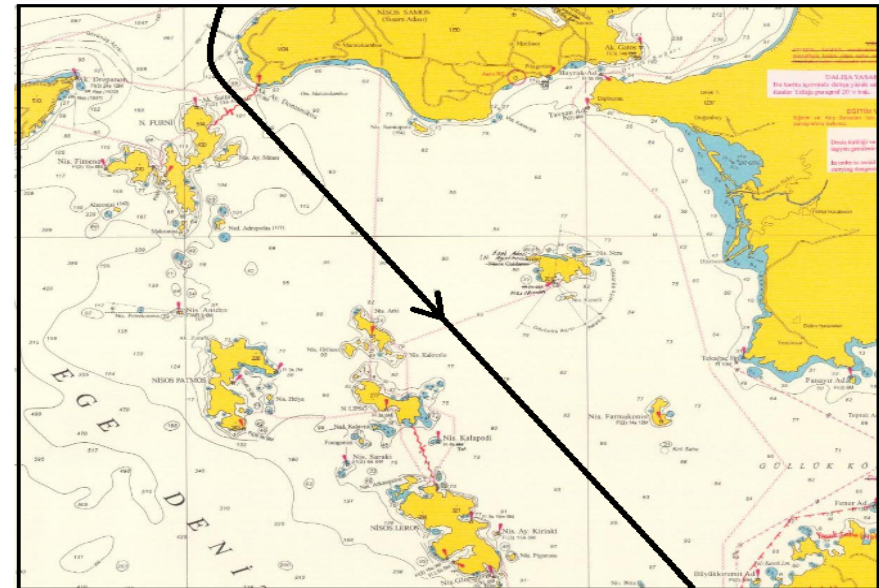
SAKIZ (CHIOS & Nisos Pasas to starboard



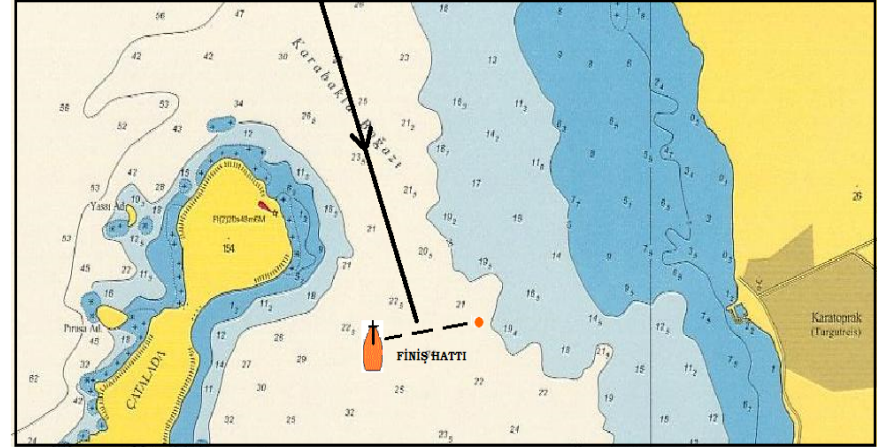
Sungukaya Island to starboard



Fourni Island to starboard –  
Samos Island to port  
Leros & Kalymnos islands to starboard







Finish  
(RC Vessel)  
37° 0.600'N  
027° 13.820'E